

Deer Creek State
Park Beach



AID

TO TA

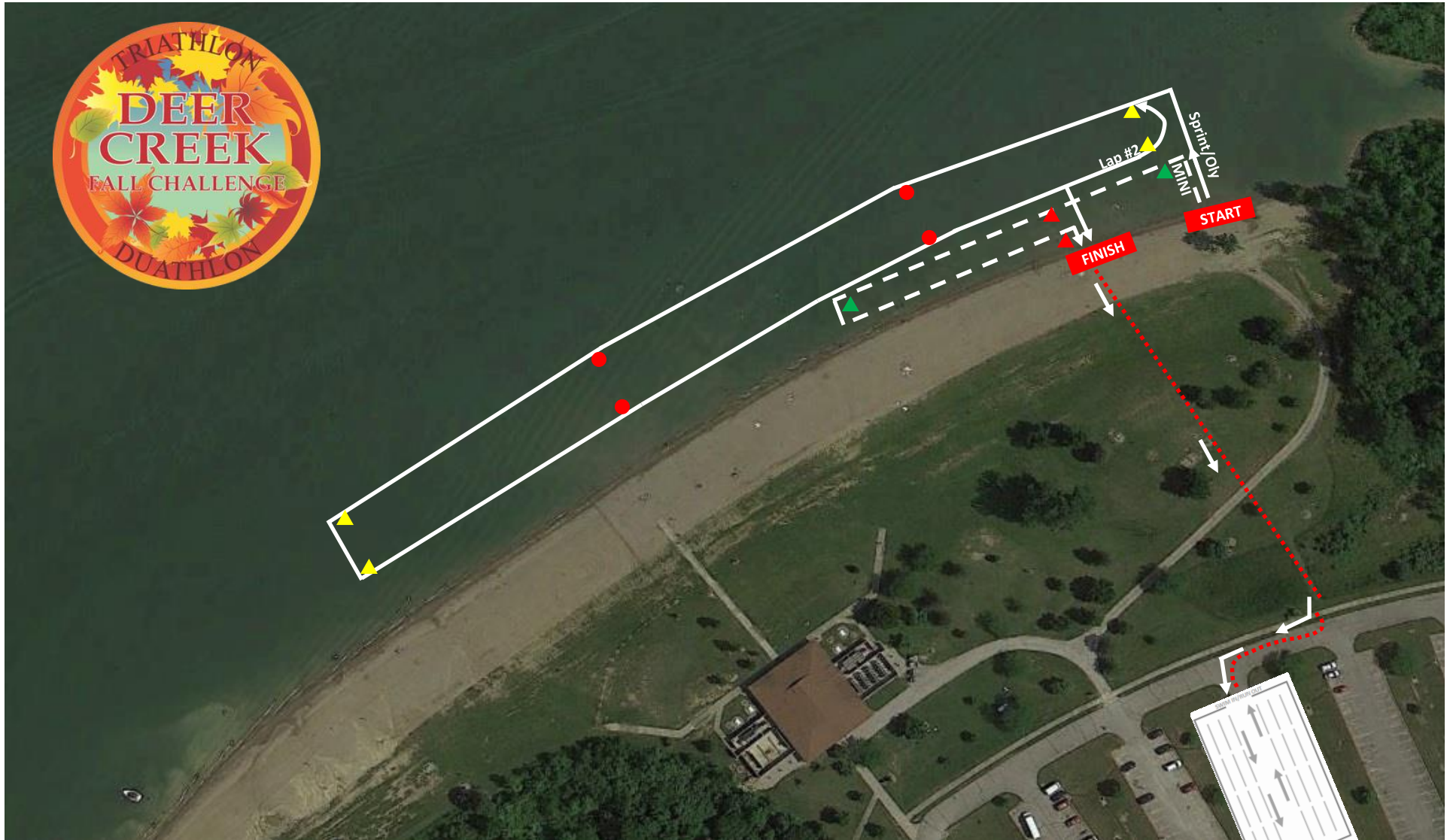
FINISH

TRANSITION AREA
PARTICIPANT PARKING
PARTICIPANT PARKING
PARTICIPANT PARKING

3

To overflow parking
when main parking
lots fill up





DEER CREEK FALL CHALLENGE

Swim Course

750m – 1 lap

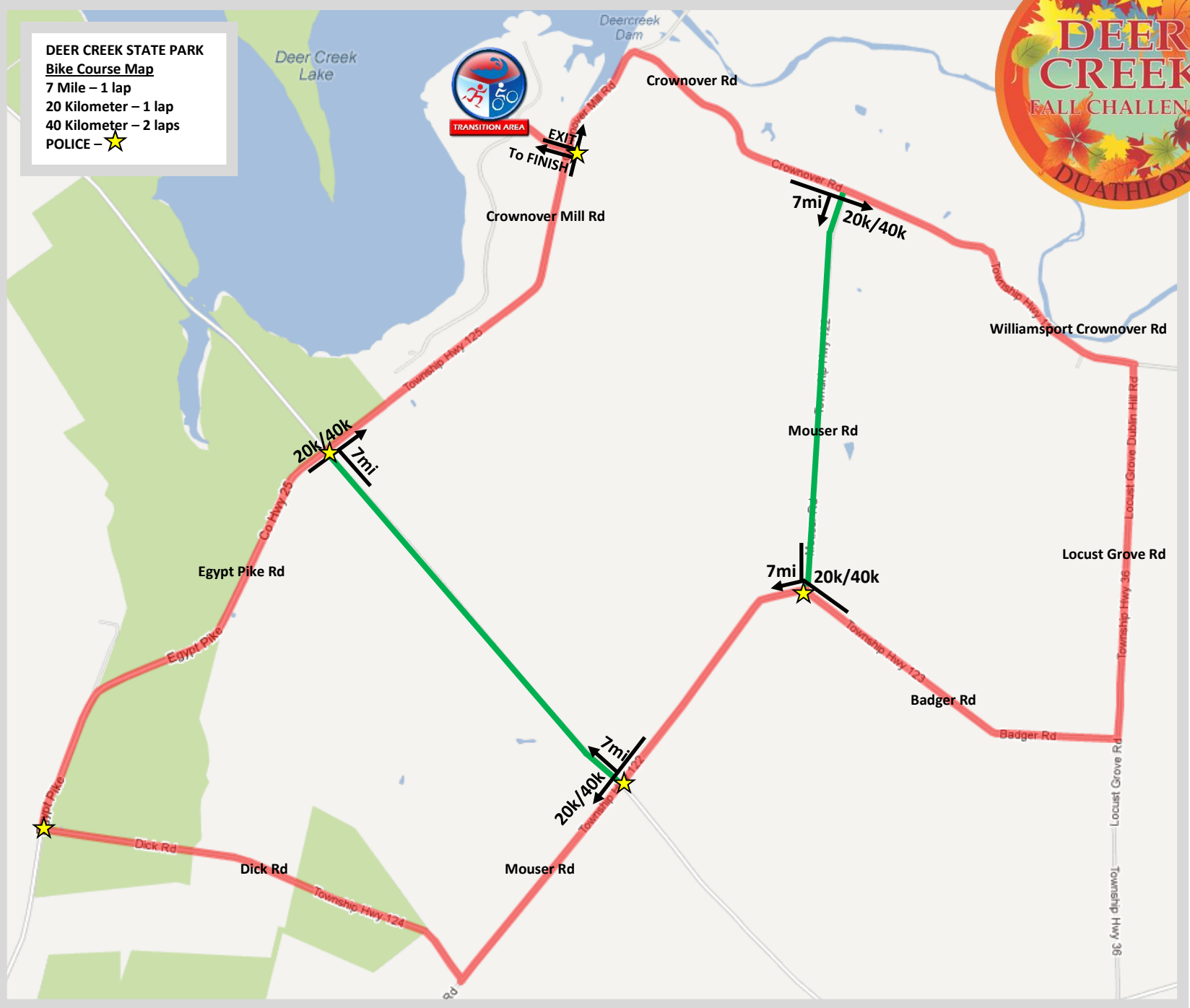
1500m – 2 laps

250y – 1 lap

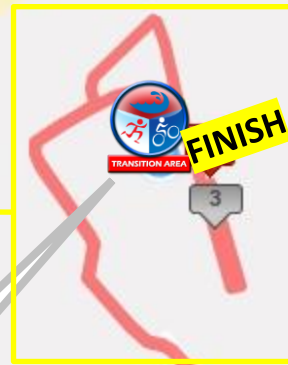
Swim Course Specifics:

The **Mini swim course** takes a left at the first GREEN triangle buoy, then continues past the next RED triangle buoy keeping it on their left. At the third GREEN buoy MINI participants will make a 180 degree turn and follow the GREEN buoys back to the finish taking a right turn at the RED triangle buoy closest to shore. The **Sprint & Olympic course** takes a left at the first YELLOW triangle buoy and continues to follow the RED cylinder buoys keeping them on their left to the final YELLOW triangle buoy. At the final YELLOW buoy Sprint & Olympic participants take a 90 degree turn to the next YELLOW triangle buoy and following the RED cylinder buoys back to the finish while keeping the GREEN buoys to their right. At the RED triangle buoy participants will either turn right to finish or continue to the YELLOW triangle buoy to start their second lap (Olympic only).

DEER CREEK STATE PARK
Bike Course Map
 7 Mile – 1 lap
 20 Kilometer – 1 lap
 40 Kilometer – 2 laps
 POLICE – ★

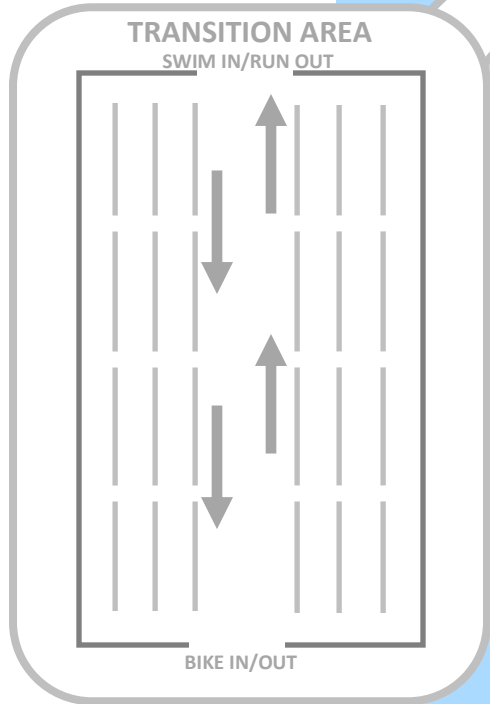


Deer Creek State Park
Park Beach



DEER CREEK STATE PARK
Run Course Map
2 Mile – 1 lap
5 Kilometer – 1 lap
10 Kilometer – 2 laps

Park Rd



2

AID

2mi TA

1

Park Rd

5k/10k TA

Crownover Mill Rd